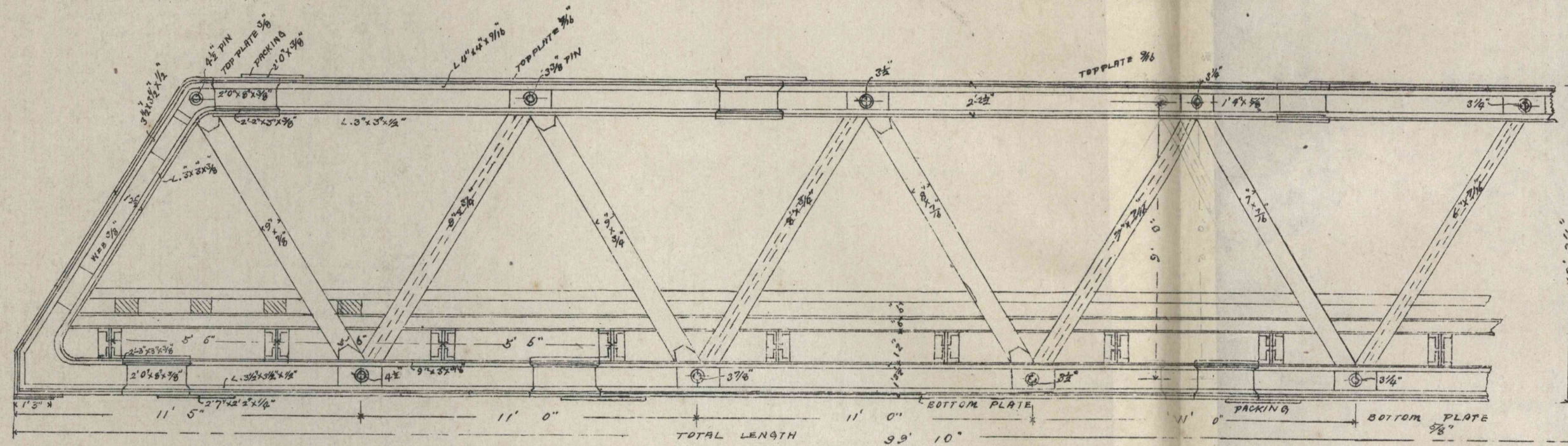
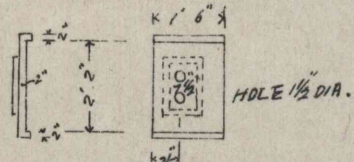
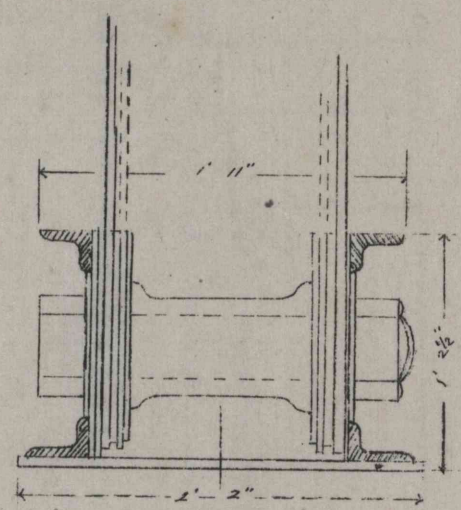
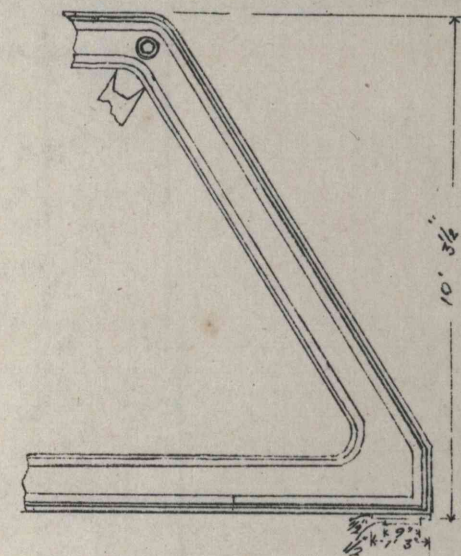
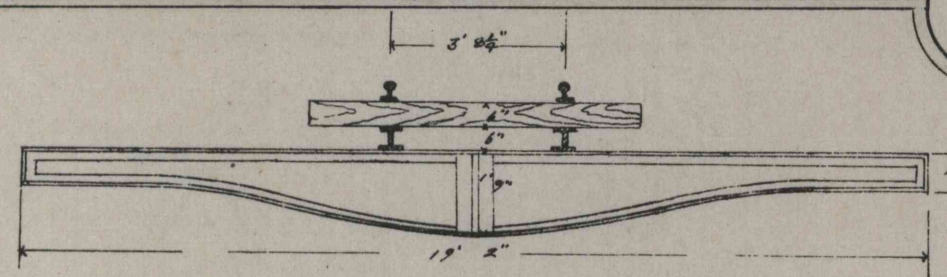


# COHIYAKUCAWA BRIDGE.



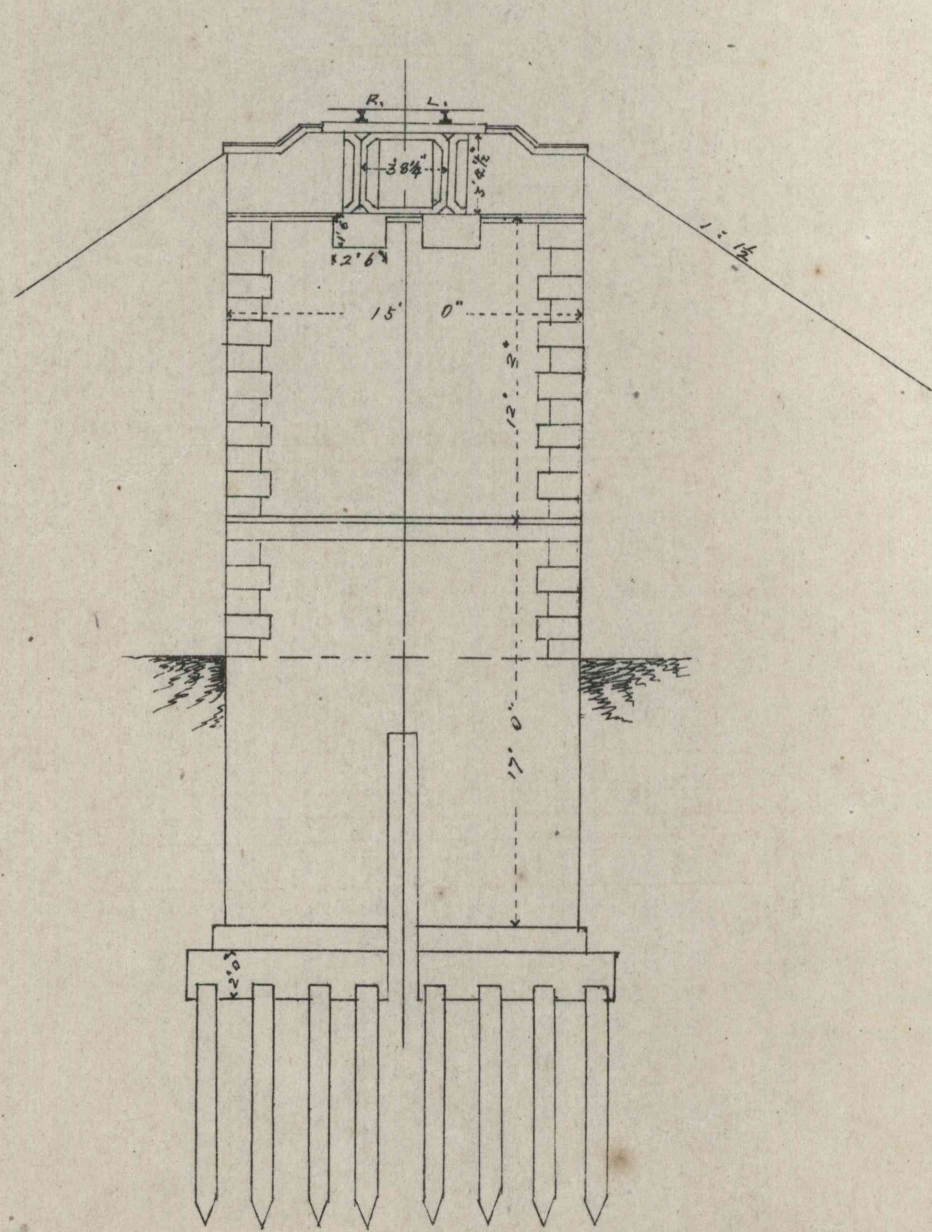
SUPERSTRUCTURE.  
Scale 4" = 20' in.



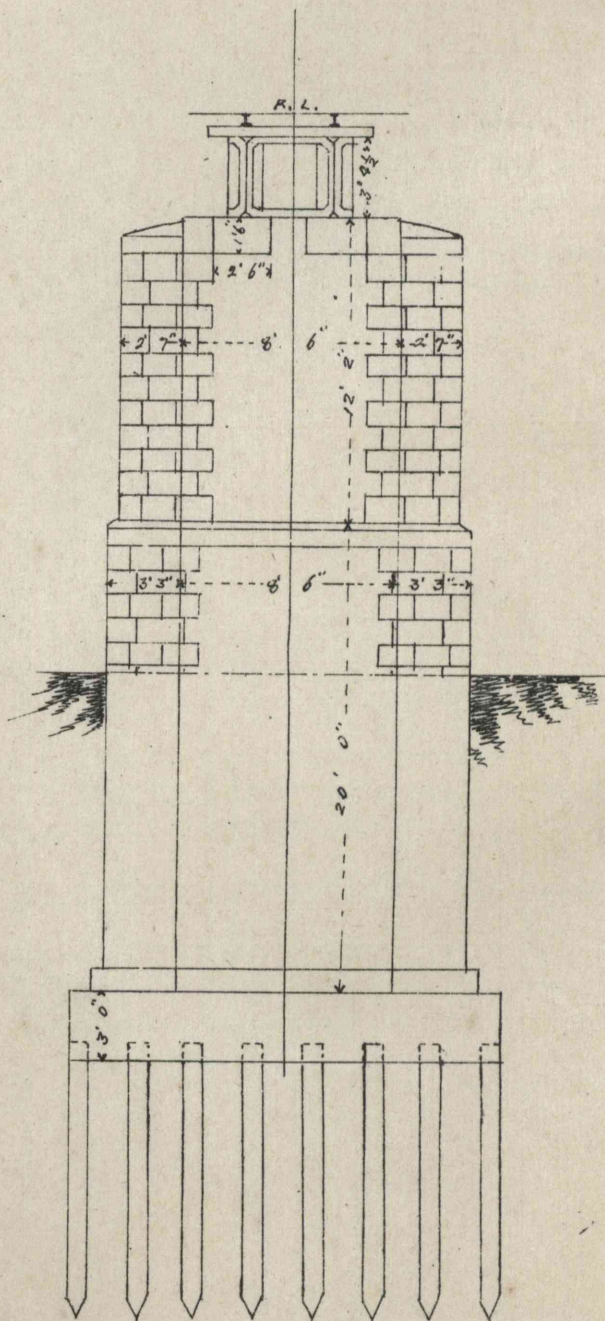
BED PLATE FIXED END.

BED PLATE SLIDING END.

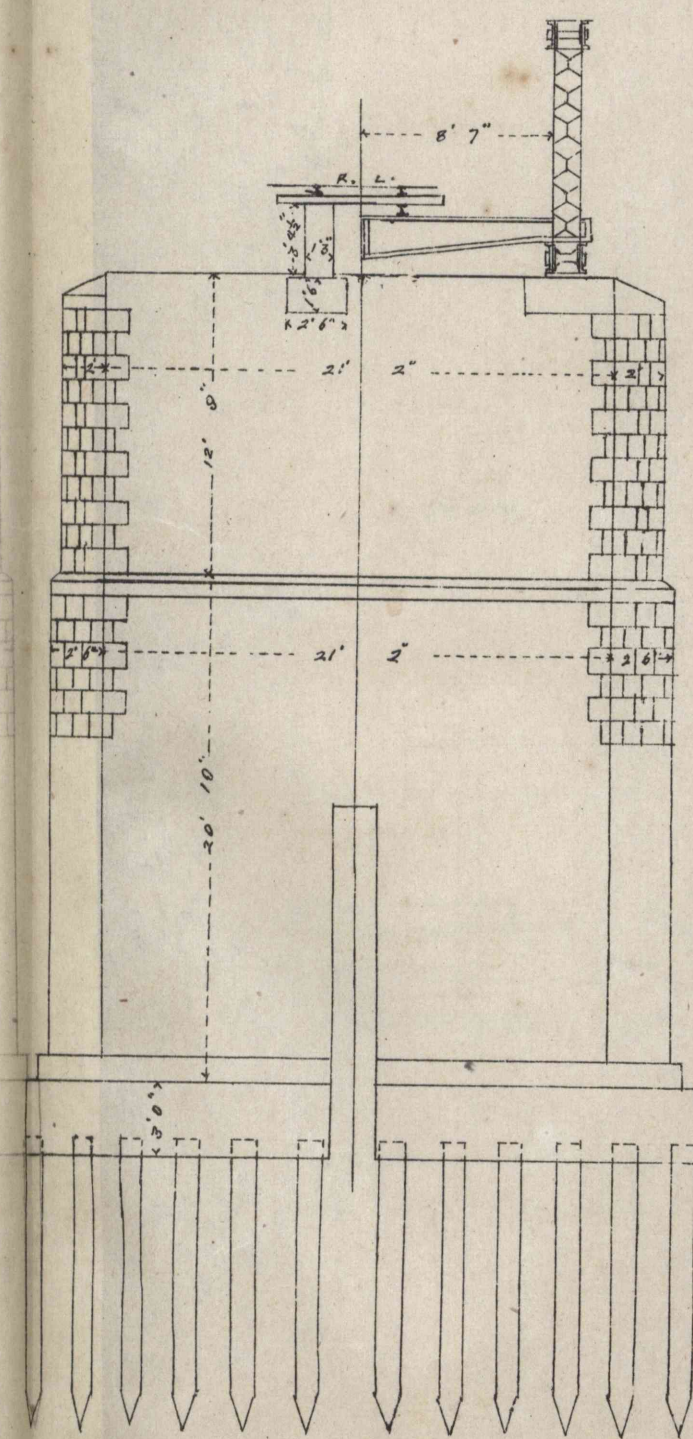
Scale 8" = 20' in.



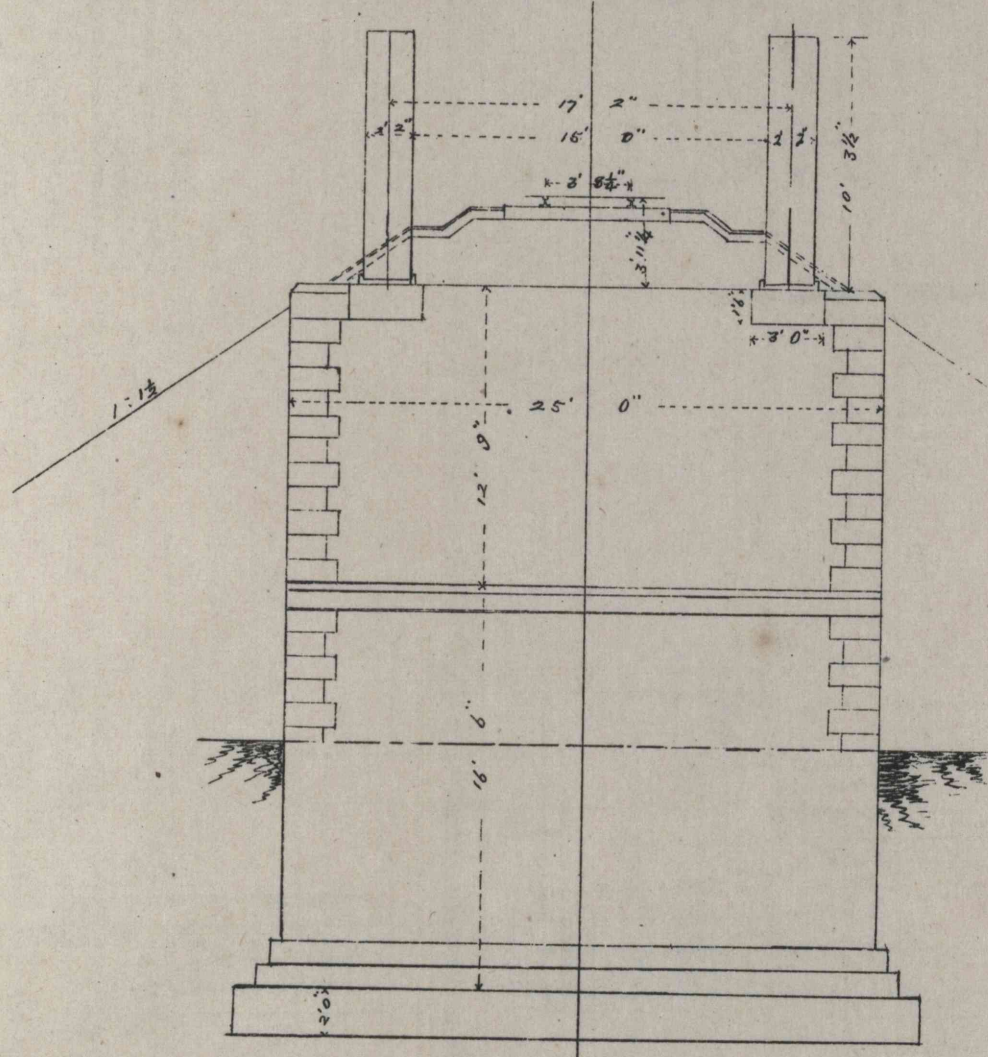
FRONT ELEVATION OF 5' ABUTMENT.



ELEVATION OF 1<sup>ST</sup> & 2<sup>ND</sup> PIER.



ELEVATION OF 3<sup>RD</sup> PIER.



FRONT ELEVATION OF 4' ABUTMENT.