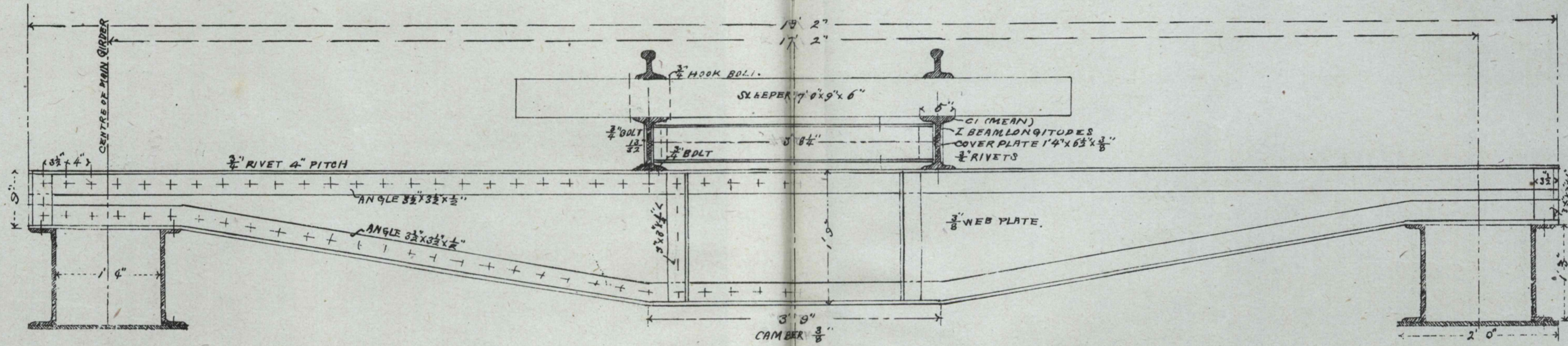
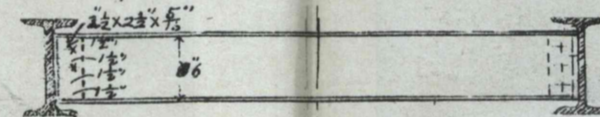


100 FT STEEL WARREN GIRDER.

ELEVATION.

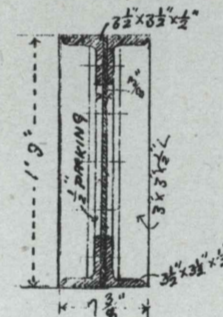


CR. PIECE BETWEEN LONGITUDES

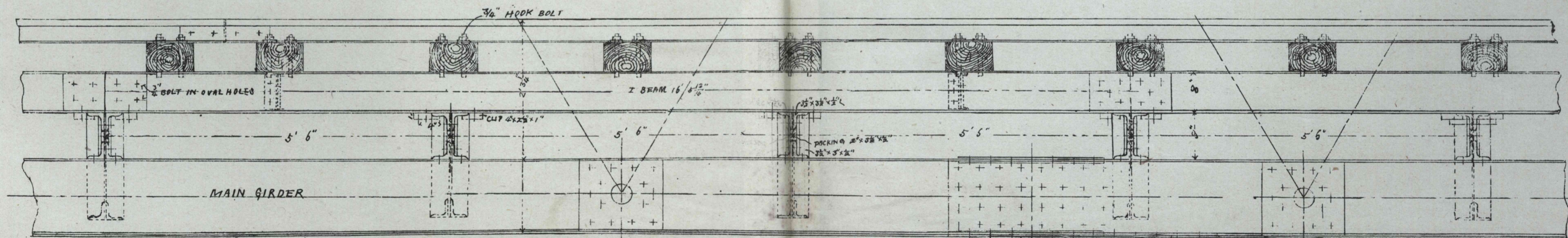


5' PER FT.

CROSS SECTION AT CENTRE



SIDE ELEVATION.



Note. 5 lengths of Z beam longitudines each 16'8 1/2" long and 1 length of 17'5 1/2" long are required under one line of rails for each span. Cross girders to be fixed at 5'6" centers for that parts which comes over the pier joining each other of the main girders at both ends.

Scale 3/4 inch to 1 foot.