

No 2.

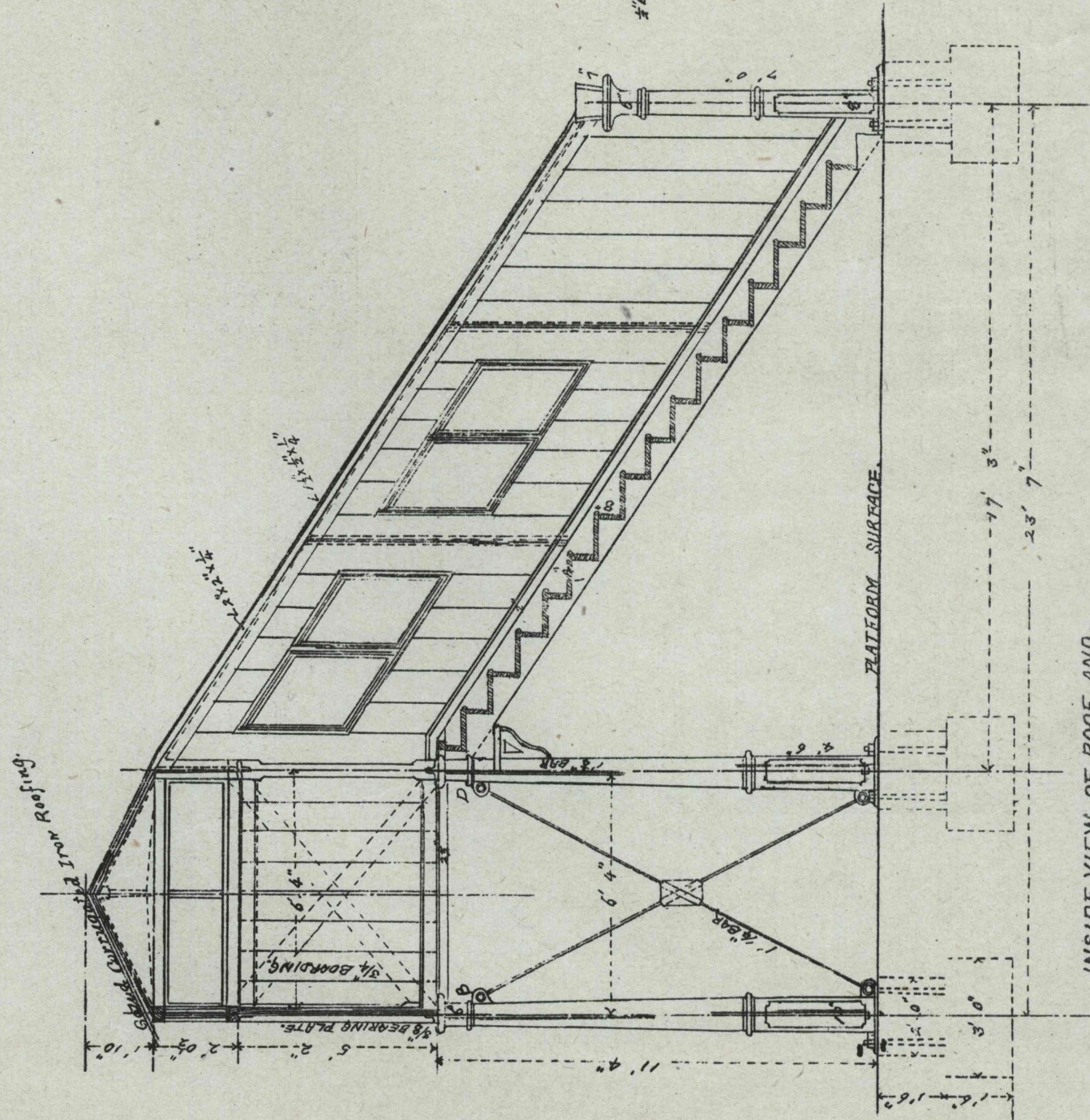
Scale for General Elevation Plan & Cross section:

1/4 inch = 1 foot.

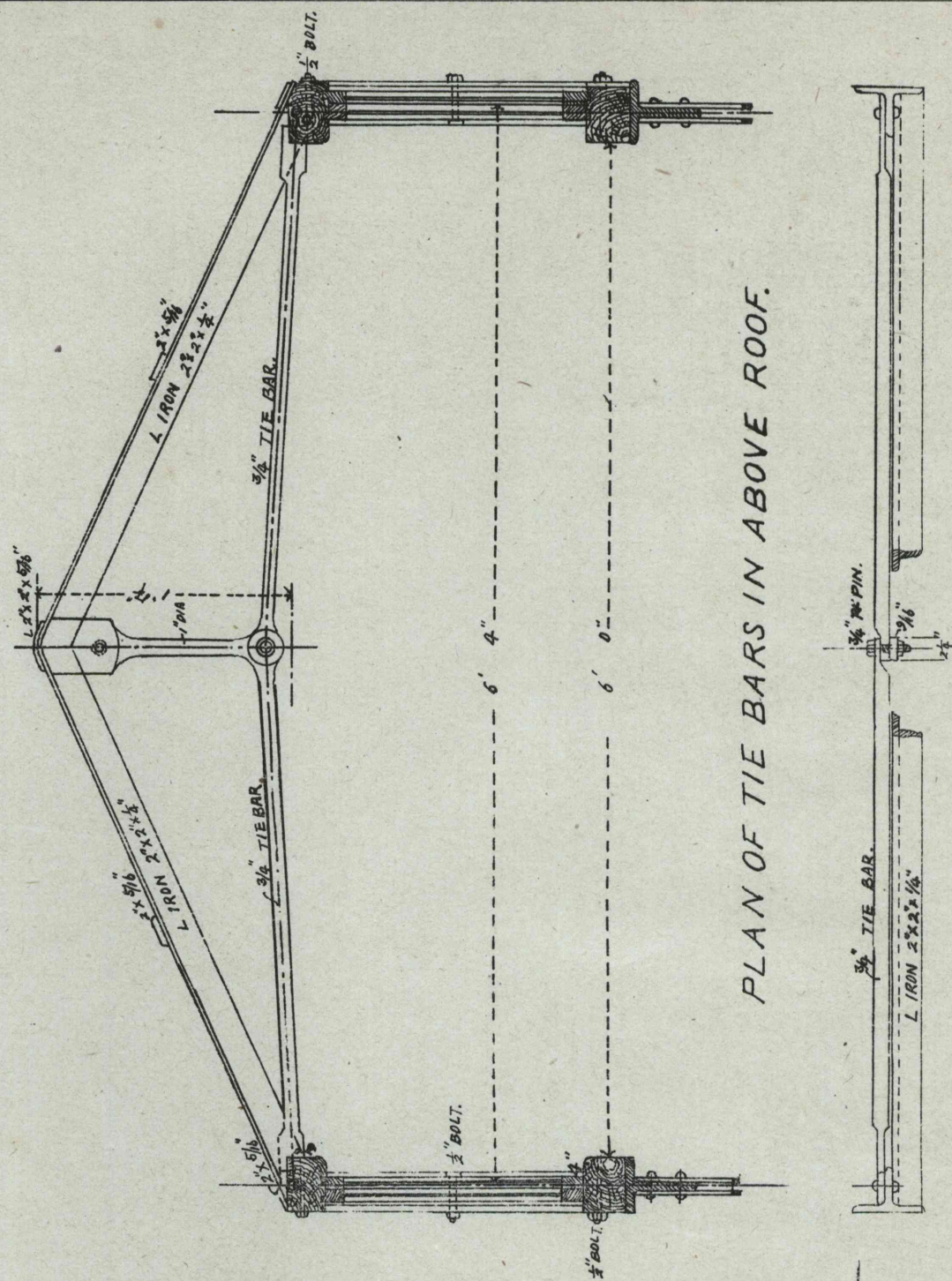
Scale for Details. 1 inch = 1 foot.

CROSS SECTION OF BRIDGE.

Thro' centre of stairs.

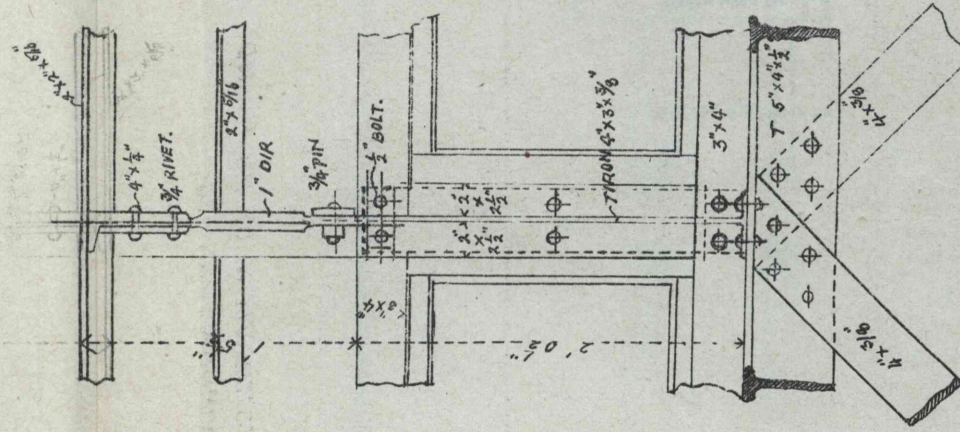


CROSS SECTION OF ROOF & WINDOWS.

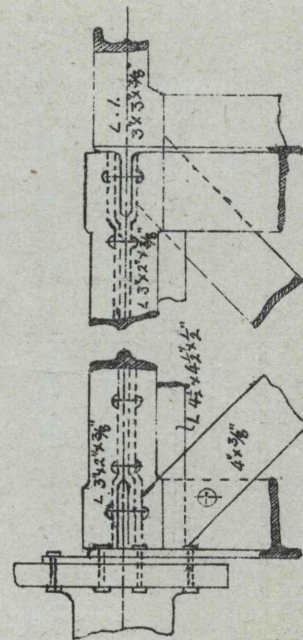


PLAN OF TIE BARS IN ABOVE ROOF.

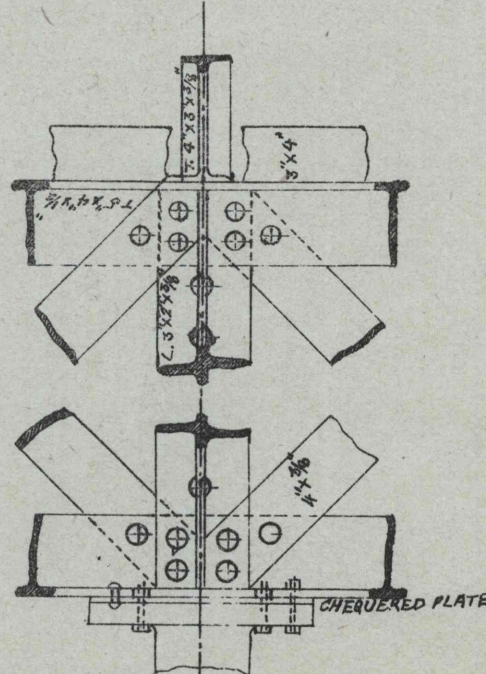
INSIDE VIEW OF ROOF AND WINDOW FRAMES.



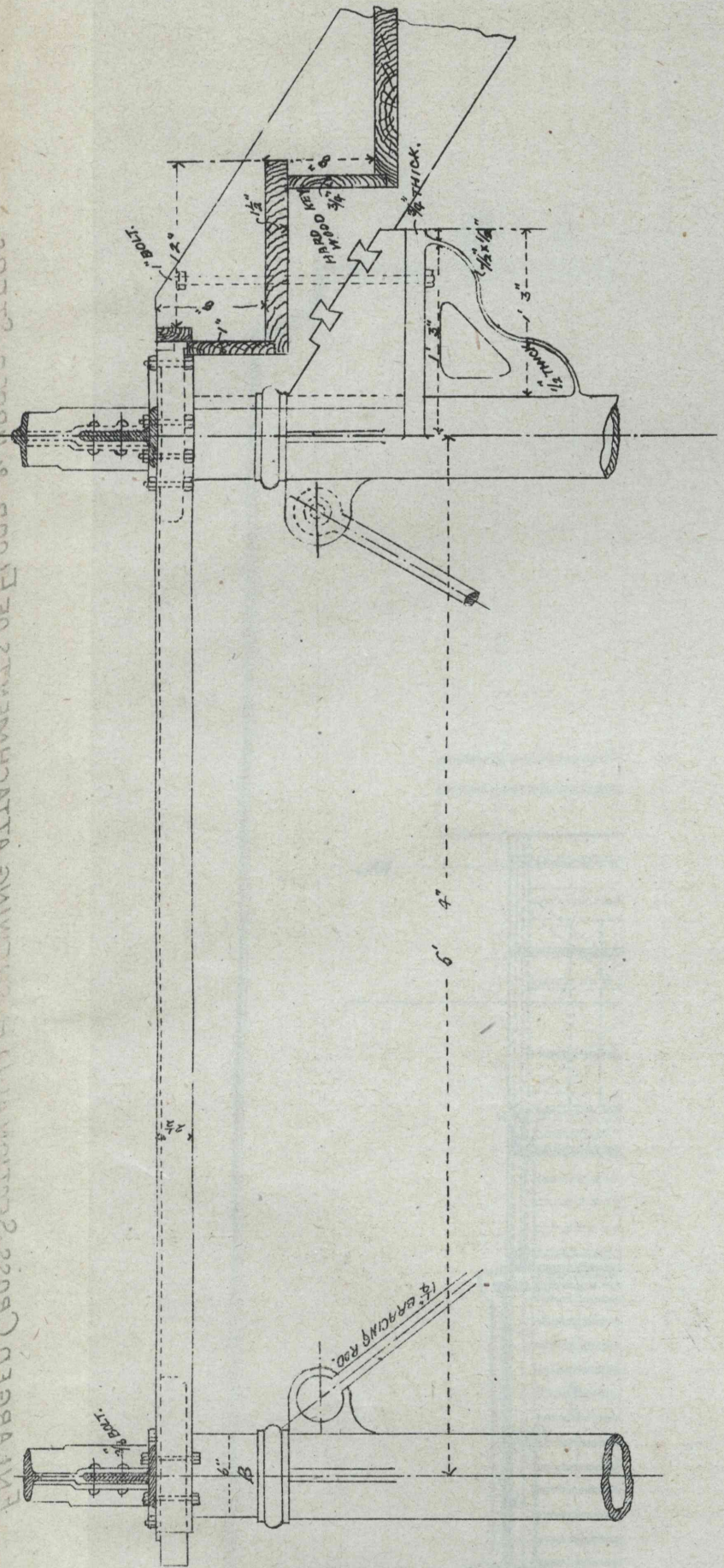
SIDE VIEW OF JOINT, E. LOOKING DOWNWARD.



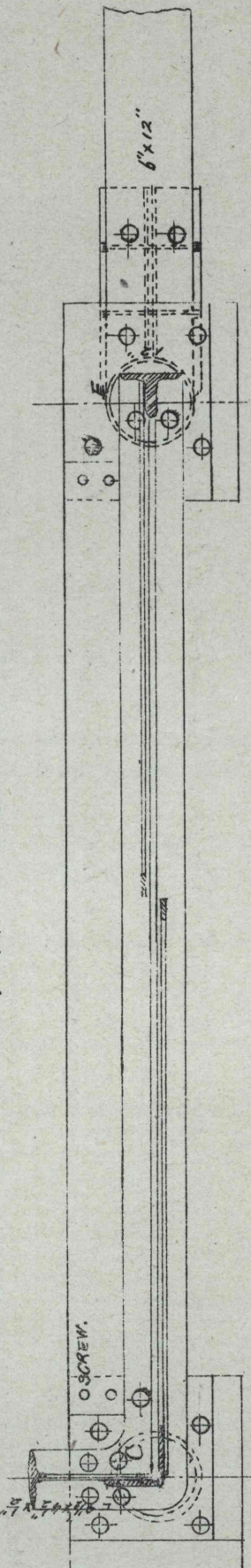
SIDE VIEW OF JOINT, B.



ENLARGED CROSS SECTIONAL D B SHEWING ATTACHMENTS OF FLOOR & UPPER STEPS.



ENLARGED SECTIONAL PLAN AT END OF BRIDGE B.C.D.E.



R. Uchida.