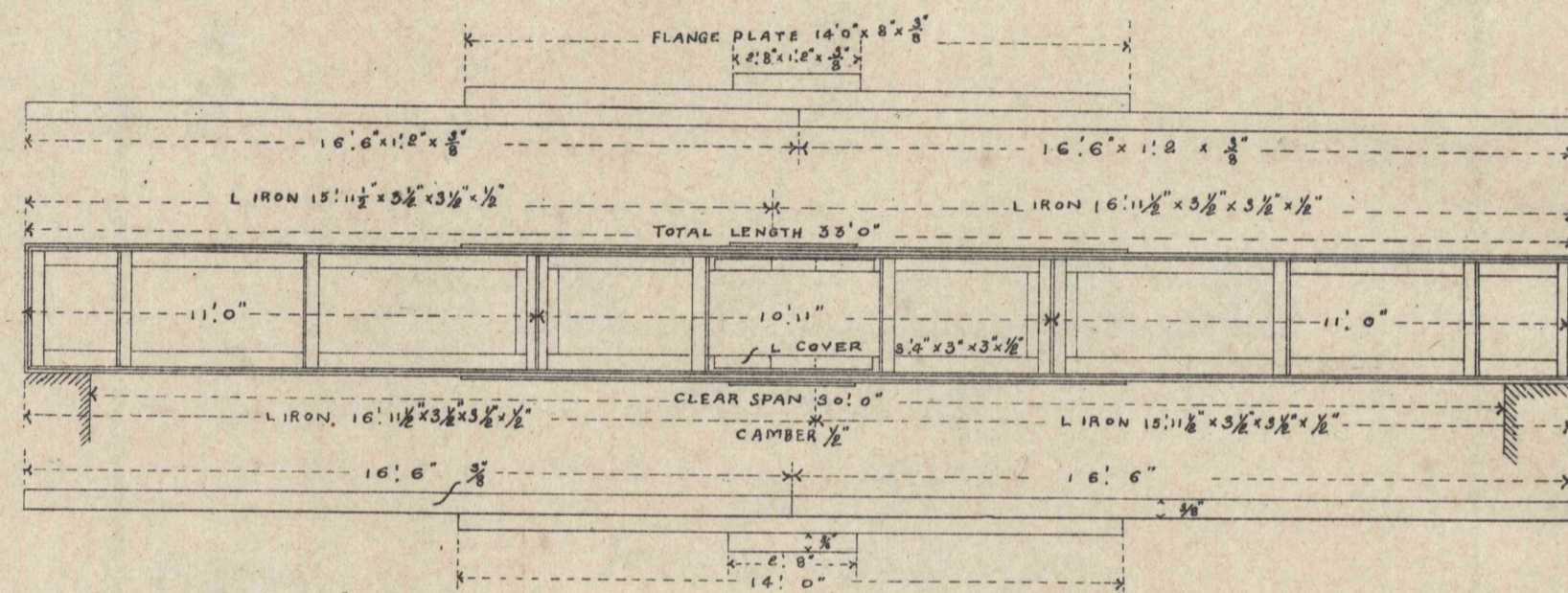


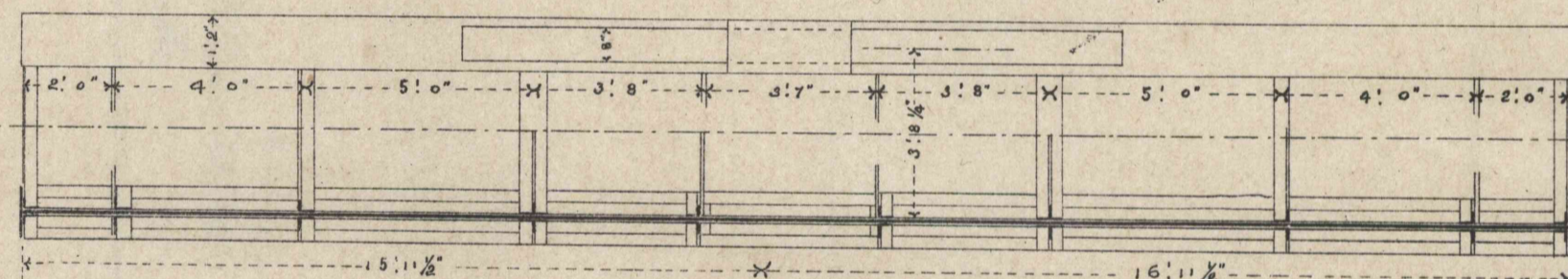
STANDARD IRON PLATE GIRDERS.

30 FEET SPAN.

ELEVATION.



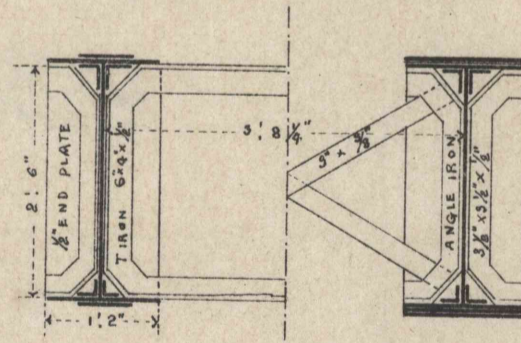
PLAN.



SCHEDULE OF QUANTITIES OF IRONWORK FOR ONE SPAN (30 FEET.)

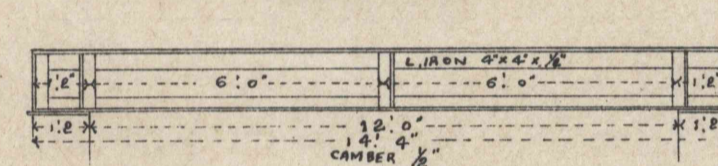
NO	DESCRIPTIONS	SIZES	WT IN LBS	REMARKS
4	PLATES	14'0" x 8" x 3/8"	554	FLANGES
8	DO	16'0" x 12" x 3/8"	2297	DO
4	DO	2'6" x 12" x 3/8"	185	COVERS
16	DO	6" x 3" x 3/8"	40	PACKINGS
8	DO	2'8" x 3" x 3/8"	80	PILING PIECES
64	DO	4" x 3" x 3/8"	106	PACKINGS
4	DO	11'0" x 2'6" x 3/8"	1650	WEBS
2	DO	10'11 1/2" x 2'6" x 3/8"	616	DO
4	DO	11'0" x 1'8" x 3/8"	154	BEARING PLATES
4	DO	11'0" x 1'0" x 3/8"	507	WEB JOINT COVERS
4	DO	2'7" x 1'2" x 3/8"	255	END PLATES
8	L IRON	16'11 1/2" x 3 1/2" x 3/8"	1590	
6	DO	15'11 1/2" x 3 1/2" x 3/8"	1492	
22	DO	5'6" x 3 1/2" x 3/8"	834	OUTSIDE STIFFENERS
4	DO	11'6" x 3 1/2" x 3/8"	498	INSIDE "
8	DO	3'4" x 3 1/2" x 3/8"	245	COVERS
4	T IRON	3'6" x 3 1/2" x 3/8"	382	OUTSIDE STIFFENERS
2	DO	11'6" x 3 1/2" x 3/8"	364	INSIDE "
8	FLAT IRON	4'0" x 3" x 3/8"	120	DIAGONAL BRACINGS
600	LIN FEET	3/8" RIVET IRON	386	
			12665	5' 13' 0" 2

CROSS SECTION.

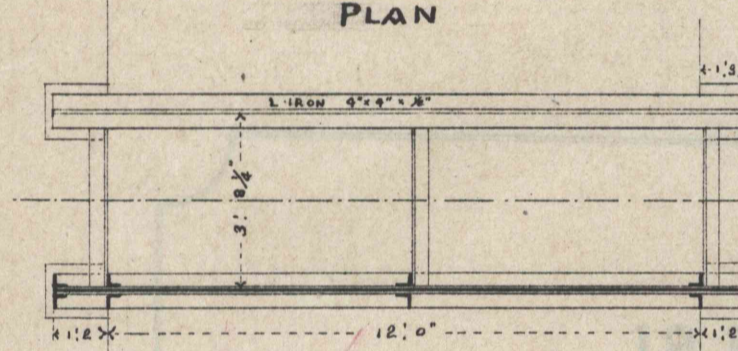


12 FEET SPAN.

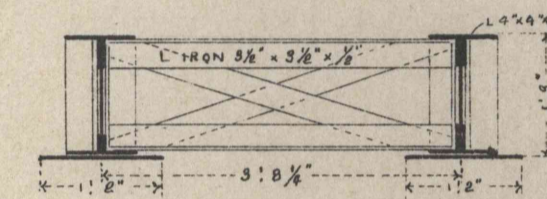
ELEVATION



PLAN



CROSS SECTION

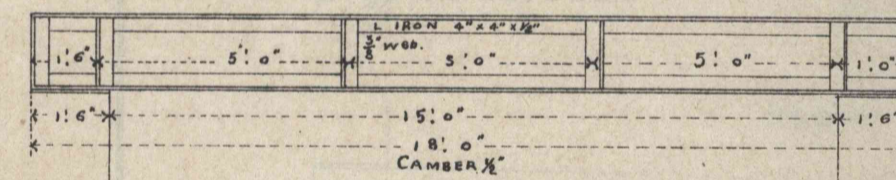


SCHEDULE OF QUANTITIES OF IRONWORK FOR ONE SPAN (12 FEET)

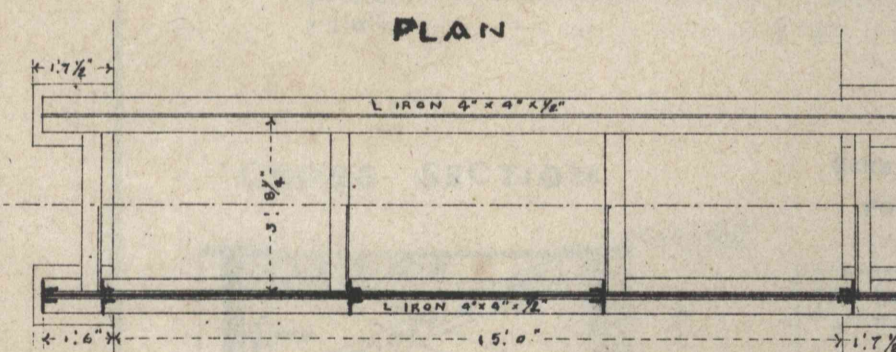
NO	DESCRIPTIONS	SIZES	WT IN LBS	REMARKS
2	PLATES	14'0" x 13" x 3/8"	540	WEB
4	DO	1'3 1/2" x 1'2" x 3/8"	120	BEARING PLATES
8	L IRON	14'0" x 4" x 3/8"	1433	FLANGES
20	DO	1'2" x 3 1/2" x 3/8"	298	HORIZONTAL STIFFENERS
6	DO	3'8" x 3 1/2" x 3/8"	238	HORIZONTAL TIES
6	FLAT BARS	3'9" x 2 1/2" x 3/8"	72	DIAG BRACINGS
20	DO	7" x 3 1/2" x 3/8"	53	PACKINGS
90	LIN FEET	3/8" RIVET IRON	133	
			2887	1' 5' 3" 100

15 FEET SPAN.

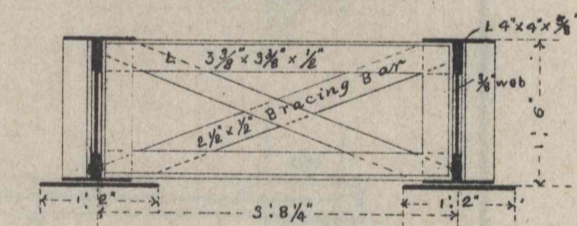
ELEVATION.



PLAN



CROSS SECTION



SCHEDULE OF QUANTITIES OF IRONWORK FOR ONE SPAN (15 FEET)

NO	DESCRIPTIONS	DIMENSIONS	WT IN LBS	REMARKS
2	PLATES	18'0" x 16" x 3/8"	810	WEB
4	DO	1'7 1/2" x 1'6" x 3/8"	150	BEARING PLATES
8	L IRONS	18'0" x 4" x 3/8"	2212	
24	DO	1'5" x 3 1/2" x 3/8"	380	VERTICAL STIFFENERS
8	DO	3'6" x 3 1/2" x 3/8"	300	HORIZONTAL TIES
8	FLAT BARS	3'9" x 2 1/2" x 3/8"	90	DIAG BRACINGS
24	DO	1'0" x 3 1/2" x 3/8"	147	PACKINGS
120	L FEET	3/8" RIVET IRON	177	
			4278	1' 16" 2 1/2

Rushida