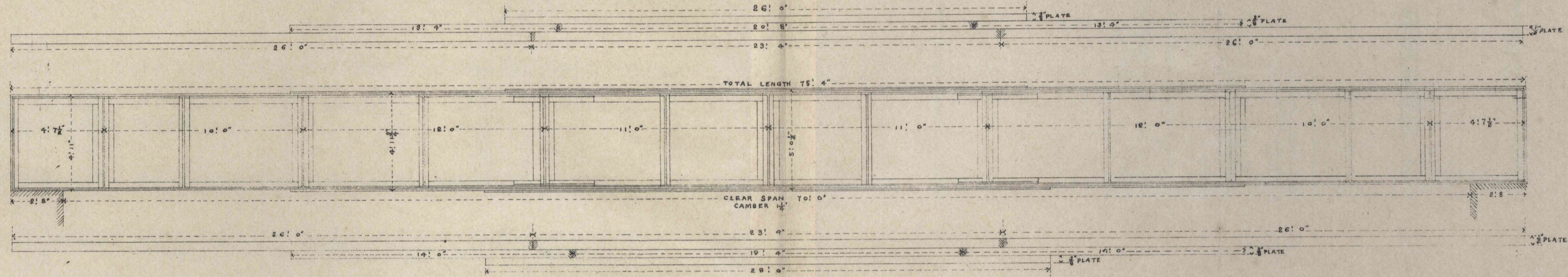
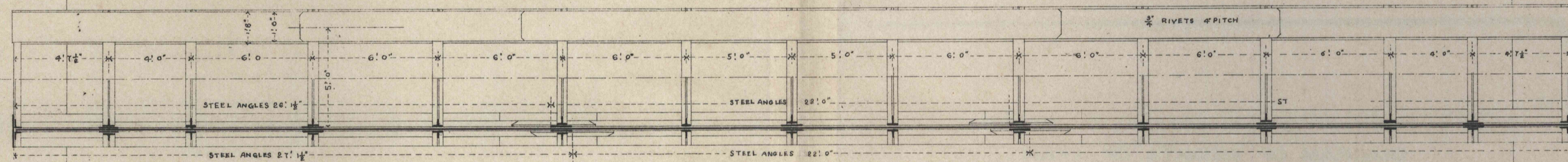


70 FEET SPAN.
ELEVATION.



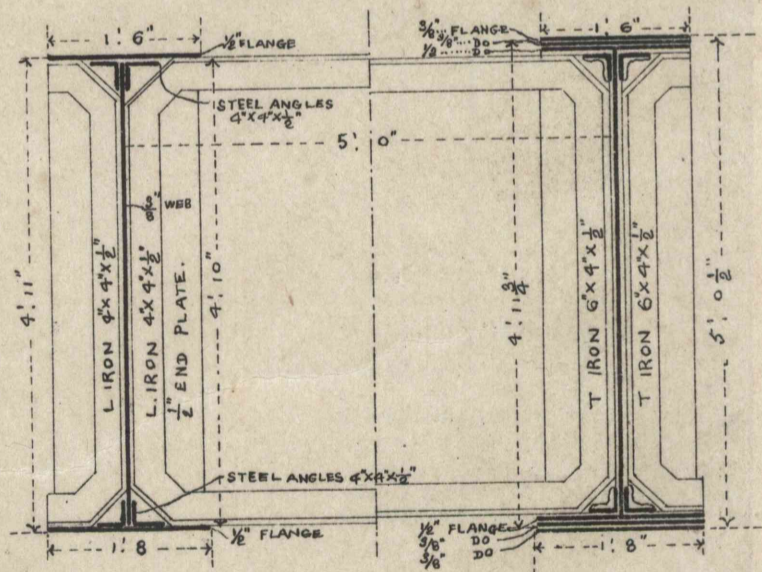
PLAN.



SCHEDULE OF MATERIALS
FOR ONE SPAN.

| NO | DESCRIPTIONS | DIMENSIONS | WEIGHT IN LBS | REMARKS |
|-------|--------------|----------------------------|------------------|------------------------|
| 2 | STEEL PLATES | 26' 0" x 11 1/2" x 3/8" | 1217 | FLANGES |
| 2 | DO | 20' 8" x 11 1/2" x 3/8" | 967 | DO |
| 4 | DO | 18' 0" x 11 1/2" x 3/8" | 1248 | DO |
| 2 | DO | 23' 0" x 11 1/2" x 3/8" | 1956 | DO |
| 4 | DO | 26' 0" x 11 1/2" x 3/8" | 3245 | DO |
| 2 | DO | 28' 0" x 11 1/2" x 3/8" | 1456 | DO |
| 2 | DO | 14' 0" x 11 1/2" x 3/8" | 1008 | DO |
| 4 | DO | 14' 0" x 11 1/2" x 3/8" | 1456 | DO |
| 2 | DO | 28' 4" x 11 1/2" x 3/8" | 1618 | DO |
| 4 | DO | 26' 0" x 11 1/2" x 3/8" | 3605 | DO |
| 4 | DO | 11' 0" x 11 1/2" x 3/8" | 3318 | WEBS |
| 4 | DO | 18' 0" x 11 1/2" x 3/8" | 3619 | DO |
| 4 | DO | 10' 0" x 11 1/2" x 3/8" | 3016 | DO |
| 4 | DO | 4' 7 1/2" x 11 1/2" x 3/8" | 1595 | DO |
| 28 | DO | 4' 12" x 11 1/2" x 3/8" | 1885 | WEB COVERS |
| 8 | DO | 2' 8" x 4 1/2" x 3/8" | 178 | FLANGE COVERS |
| 8 | DO | 4' 8" x 8 1/2" x 3/8" | 876 | DO |
| 4 | DO | 4' 10" x 11 1/2" x 3/8" | 605 | END PLATES |
| 8 | STEEL ANGLES | 20' 1/2" x 4" x 3/8" | 2717 | CONNECTING WEBB FLANGE |
| 8 | DO | 27' 1/2" x 4" x 3/8" | 2821 | DO |
| 8 | DO | 22' 0" x 4" x 3/8" | 2288 | DO |
| 16 | DO | 4' 0" x 3 1/2" x 3/8" | 721 | ANGLE COVERS |
| 2 | ANGLE IRONS | 12' 6" x 4" x 3/8" | 468 | STIFFENERS |
| 4 | DO | 5' 9" x 4" x 3/8" | 287 | DO |
| 18 | TEE IRONS | 18' 5 1/2" x 4" x 3/8" | 3307 | DO |
| 24 | DO | 3' 9" x 6 1/2" x 3/8" | 2366 | DO |
| 10250 | RIVET HEADS | | 825 | |
| | | | TOTAL 47823 | 21,700 2 1/2 1/2 1/2 |

CROSS SECTION.



NOTE THESE WILL BE DISTINGUISHED FROM SIMILAR IRON SPANS BY THE BOTTOM FLANGES BEING 26" WIDE INSTEAD OF 18".

Rushday