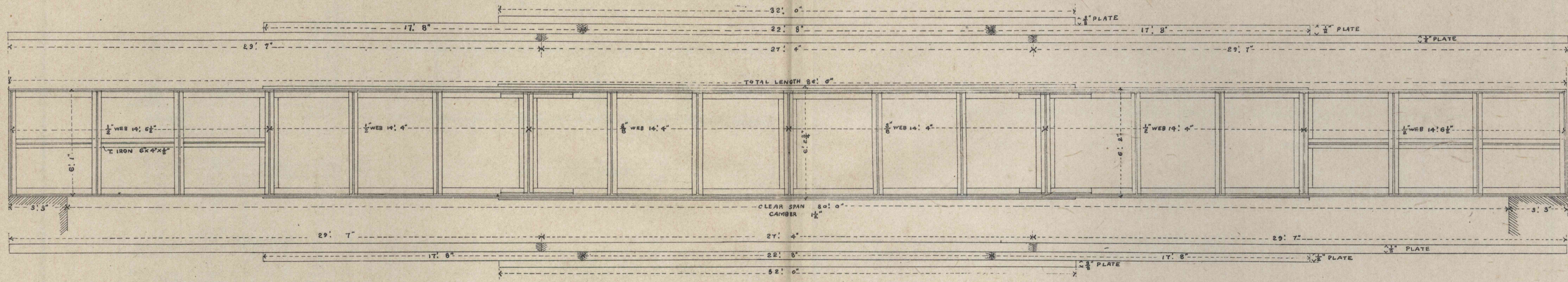
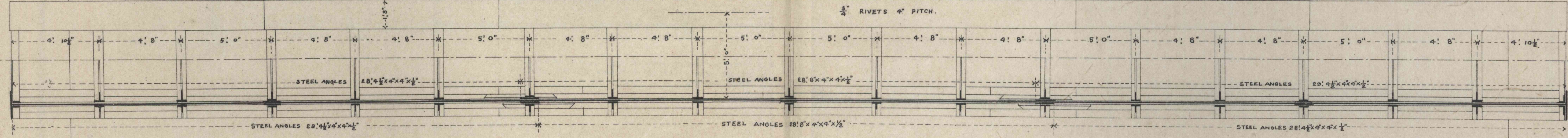


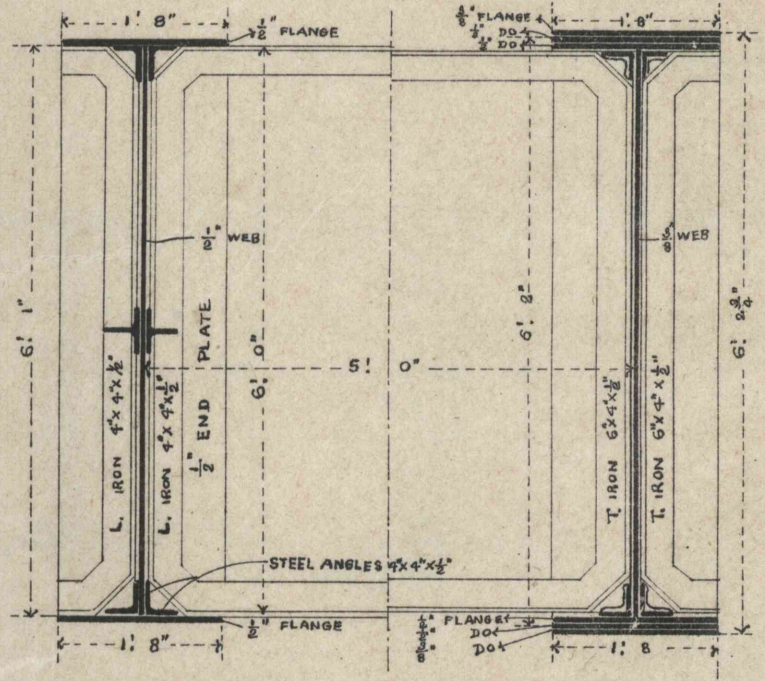
80 FEET SPAN.  
ELEVATION.



PLAN.



CROSS SECTION.



SCHEDULE OF MATERIALS  
FOR ONE SPAN.

NO	DESCRIPTIONS	DIMENSIONS	WEIGHT IN LBS	REMARKS.
4	STEEL PLATES	32' 0" x 11 1/2" x 3/8"	5528	FLANGES
4	DO	22' 8" x 11 1/2" x 3/8"	3193	DO
6	DO	17' 8" x 11 1/2" x 3/8"	4900	DO
4	DO	27' 4" x 11 1/2" x 3/8"	3790	DO
8	DO	28' 7" x 11 1/2" x 3/8"	8809	DO
4	DO	14' 4" x 11 1/2" x 3/8"	5800	WEBS
4	DO	14' 4" x 11 1/2" x 3/8"	7155	DO
4	DO	14' 4" x 11 1/2" x 3/8"	7459	DO
16	DO	21' 0" x 11 1/2" x 3/8"	1775	WEB COVERS
4	DO	5' 4" x 11 1/2" x 3/8"	355	DO
16	DO	4' 8" x 11 1/2" x 3/8"	752	FLANGE COVERS
4	DO	6' 0" x 11 1/2" x 3/8"	852	END PLATES
32	DO	2' 5" x 6" x 1/2"	809	PACKING STRIPS
16	DO	8' 5" x 4" x 1/2"	668	DO
8	DO	5' 4" x 6" x 1/2"	55	DO
8	DO	1' 0" x 3 1/2" x 1/2"	9	DO BEHIND COVER TABLE
8	DO	2' 0" x 3 1/2" x 1/2"	15	DO
8	STEEL ANGLES	28' 0" x 4" x 1/2"	5180	CONNECTING WEBS & FLANGES
8	DO	29' 1 1/2" x 4" x 1/2"	2629	DO
8	DO	28' 1 1/2" x 4" x 1/2"	3198	DO
10	DO	9' 0" x 3 1/2" x 1/2"	777	ANGLE COVERS
4	ANGLE IRONS	7' 3" x 4" x 1/2"	287	STIFFENERS
2	DO	2' 1 1/2" x 4" x 1/2"	564	DO
34	T. E. IRONS	7' 5" x 6" x 1/2"	9108	DO
17	DO	2' 1 1/2" x 6" x 1/2"	5997	DO
15	DO	14' 0" x 6" x 1/2"	1017	HORIZONTAL STIFFENERS
15000	RIVET HEADS		10000	
TOTAL			16818	327 6/8 21 LBS.

R. W. H. D.